

Operation Care Packages Draw String Bag for US Troops



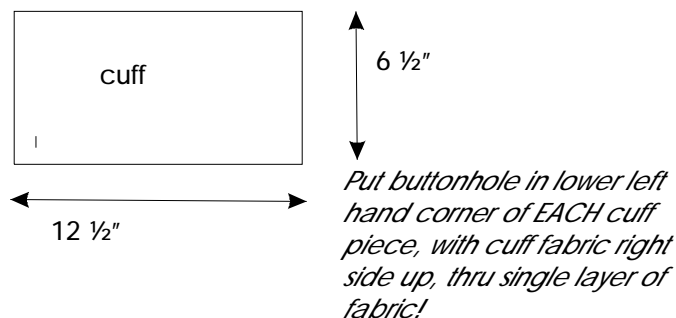
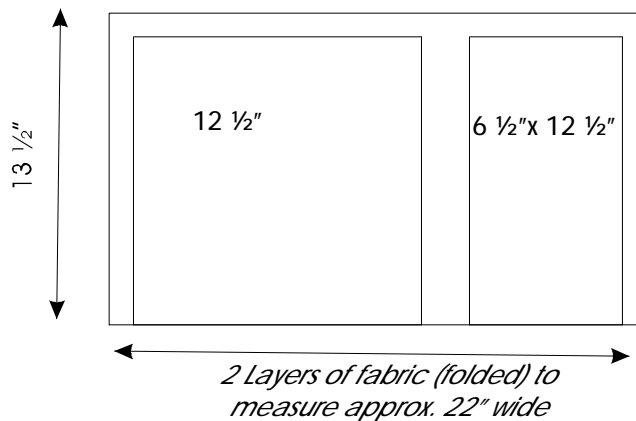
Operation Car Package believes it is an honor for us to ship care packages to our deployed troops throughout the world. Their goal is to make sure that no "hero" serving our country is forgotten. Their web page is www.operationcarepackages.org and they are in need of drawstring bags that they fill with plastic zip type gallon bags of hygiene items. The drawstring bags give the soldiers something to keep their personal items in besides just a plastic bag and sometimes they pass the drawstring bags onto the children in the area. This pattern was developed by Emily Kolasa, Stitches Etc, Inc., 2008, www.stitchesetc.biz. PLEASE SHARE THIS PATTERN WITH OTHERS so that we can try to provide Operation Care Packages with the drawstring bags they need for our soldiers around the world! You can ship completed drawstring bags directly to Operation Care Packages (see web page) or bring them to Stitches Etc Home Center, 2195 Greenspring Dr, Timonium, MD 21093, 410-561-3101

Materials:

3/8 yd 44" wide fabric
 2 yd drawstring
 Sewing machine in good working order (serger can also be used)
 Rotary cutting equipment, basic sewing supplies

Cutting Directions:

With the 3/8 yd of fabric folded in half, selvages together, cut thru both layers to yield:
 2 - 12 1/2" squares ("body" of bag)
 2- 6 1/2"x 12 1/2" rectangles (top "cuff" of bag)
 You could certainly do patchwork on the 12 1/2" squares or embroidery, if desired!



Construction:

Stitch a small buttonhole (about 1/2" for the drawstring) in the lower left hand corner of EACH cuff piece, about 1" in from the side and 1" up from the bottom edge. You can iron a small piece of fusible interfacing to the wrong side of the cuff where you are going to stitch the button hole to make the fabric a bit more firm, if you want to. Then, place the cuff pieces right sides together (RST) and make sure that both buttonholes are along the lower edge and stitch the side seams using approximately 1/4" seam overlock stitch on your sewing machine or use a serger (overlock machine). Fold the cuff in half, wrong sides together (WST), and press. Sew/serge the 2 - 12 1/2" squares together using the same seam allowance and technique you used for the cuffs around the sides seams and across the bottom. Turn right sides out (RSO) and press. Place the cuff over the bag so that the raw edges of the cuff are even with the raw edges of the top of the bag, and the side of the cuff with the buttonholes is facing the bag; make sure to match the side seams (the side of the cuff without the buttonholes is facing you). Sew/serge around using same techniques as before. Stitch all the way around the cuff about 1" down from the top fold to make a casing. Cut the drawstring in half to yield 2 - 1 yd pieces. Insert 1 drawstring in one buttonhole, thread it through the casing all the way around the bag and out the same buttonhole. Tie the ends in a knot. Do the same for the other drawstring in the other buttonhole.